

Census 2021: Ward Overview

Alastair Jackson, Jon Taylor and John Pritchard
Strategy and Performance Service
StrategyandPerformance@oldham.gov.uk

March 2023, V1.01

1. Introduction

This report presents some ward level Topic Summaries from the 2021 Census focusing on population, age structure, ethnic group, economic activity, qualifications, housing, vehicle ownership and lone parents. To provide more context to this report, regional and national comparisons have been included along with some comparisons with the 2011 Census where available. Please note that the ward boundaries featured in this report are for the ward boundaries which were legally introduced in 2004.

2. Summary

- Werneth ward has seen the largest **increase** in **population** since 2011 (22.1%), whereas Shaw has seen the largest **decrease** in **population** (-4.3%).
- Oldham's **Pakistani** and **Bangladeshi** heritage communities now make up 22.5% of the total population of Oldham and primarily still live in the wards which surround the town centre.
- Coldhurst, St. Mary's, Alexandra and Werneth have the highest proportions of **under 16 year olds**. This in part reflects the residence patterns and different age structures of Oldham's White British, Pakistani and Bangladeshi heritage communities.
- The proportion of **employed** Oldham residents who work on a **full-time** basis has fallen significantly since 2011. Coldhurst (54.9%) has the lowest proportion of residents employed full-time. St. Mary's (60.2%) and Werneth (62.1%) also have low proportions.
- Rates of **Unemployment** and people unable to work due to **long term sickness or disability** are particularly high in Alexandra, Coldhurst, St. Mary's and Werneth.
- There are large proportions of residents from St. Mary's (20.2%), Werneth (19.8%) and Coldhurst (18.3%) who choose not to work but **stay at home** and **look after family**.

- There are dramatic inequalities in **qualification attainment** with Coldhurst, St. Mary's and Alexandra having the highest proportions of residents with no qualifications and the lowest proportions with degree level qualifications. Saddleworth North and Saddleworth South have the lowest proportions of residents with no qualifications and the highest proportions with degree level qualifications.
- The proportion of properties that are **privately rented** in Oldham has increased significantly since 2011. St. Mary's (24.0%), Waterhead (23.4%) and Medlock Vale (21.9%) have the highest proportions whereas Royton North (10.4%), Saddleworth South (11.4%) and Saddleworth North (11.9%) have the lowest.
- There is an issue of **overcrowding** in several wards in Oldham. In Coldhurst, more than one in five households (20.9%) is overcrowded. Werneth and St. Mary's also have high proportions of overcrowded households.
- In Oldham the proportion of households with **no car or van** (27.6%) is above the national rate (23.5%). Coldhurst has low car ownership at 46.6%.
- St. James' (14.6%), Hollinwood (14.4%), and Alexandra (14.1%) have particularly high proportions of **Lone Parents** with dependent children compared to the Oldham (9.4%) and national (6.9%) averages.

3. Oldham Population

	Population 2021	Population 2011	% Change
Alexandra	14,435	11,830	22.0
Chadderton Central	11,307	10,454	8.2
Chadderton North	11,810	11,031	7.1
Chadderton South	11,485	11,019	4.2
Coldhurst	14,264	13,233	7.8
Crompton	10,322	10,581	-2.4
Failsworth East	10,370	10,352	0.2
Failsworth West	11,087	10,397	6.6
Hollinwood	12,310	11,297	9.0
Medlock Vale	15,044	12,414	21.2
Royton North	10,042	10,283	-2.3
Royton South	10,932	11,001	-0.6
Saddleworth North	9,882	9,672	2.2
Saddleworth South	9,953	10,043	-0.9
Saddleworth West and Lees	11,079	11,196	-1.0
Shaw	10,045	10,501	-4.3
St. James'	12,482	11,473	8.8
St. Mary's	16,619	13,944	19.2
Waterhead	13,791	12,027	14.7
Werneth	14,830	12,149	22.1
Oldham	242,089	224,897	7.6
England	56,490,048	53,012,456	6.6

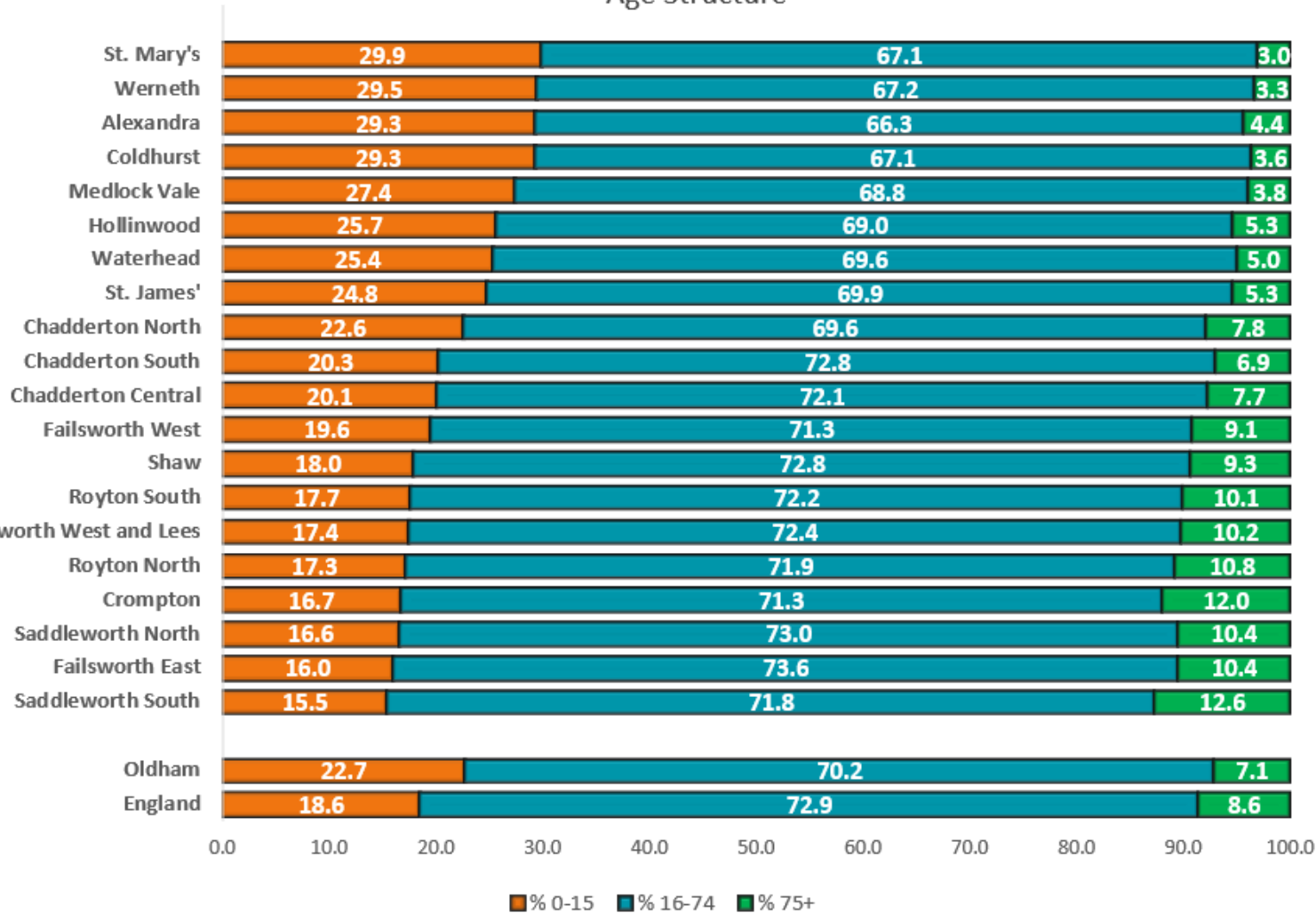
Key findings

- Oldham’s population has increased between 2011 and 2021 from 217,347 to 242,089, an increase of 7.6%. This increase in population is greater than that of England (6.6%).
- The largest increases can be seen in Werneth (22.1%), Alexandra (22.0%), Medlock Vale (21.2%), St. Mary’s (19.2%), all of which are at least twice the average increase in Oldham (7.6%).
- Some wards have seen a decrease in population with the largest seen in Shaw (-4.3%), Crompton (-2.4%), Royton North (-2.3%).
- The ward with the highest population in Oldham is St. Mary’s (as it was in 2011) with a population of 16,619. Saddleworth North replaces Saddleworth South as the ward with the lowest population at 9,882.

Source: ONS Census 2021 – TS008

4. Age Structure

Age Structure



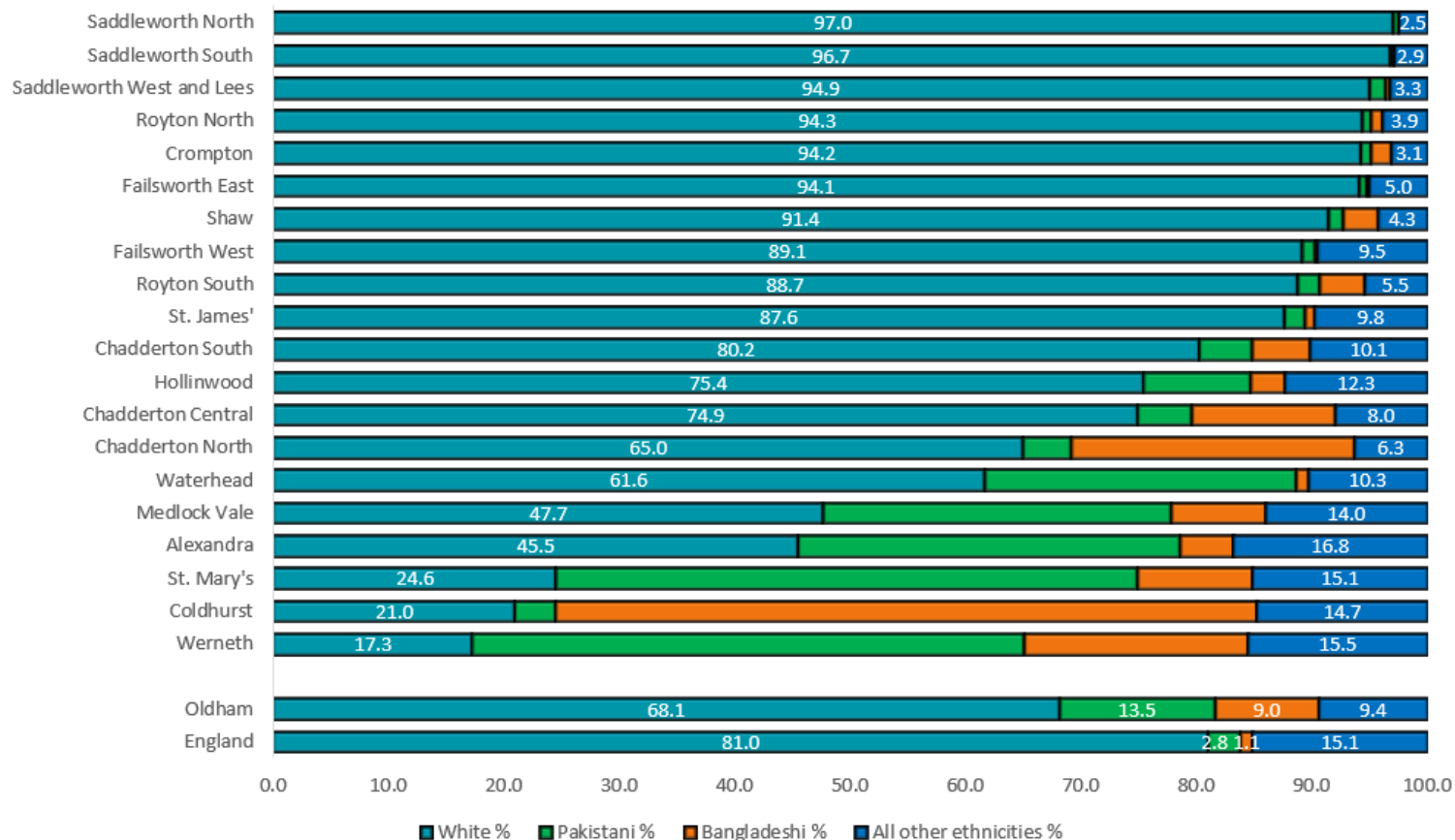
Source: ONS Census 2021 –Table TS007

Key findings

- Oldham has a relatively young population with children under 16 making up 22.7% of the total population, which is significantly higher than across England (18.6%).
- The age structure of Oldham's population varies greatly by ward, this in part reflecting the residence patterns of Oldham's White British, Pakistani and Bangladeshi heritage communities.
- St. Mary's, Werneth, Alexandra, and Coldhurst all have age structures that are much more youthful than Oldham or England overall. With proportionally more people aged 0-15 and proportionally fewer people aged 65 and over.
- Saddleworth South (12.6%), Crompton (12.0%) and Royton North (10.8%) have a significantly higher proportion of older people than Oldham overall.

5. Ethnic Group

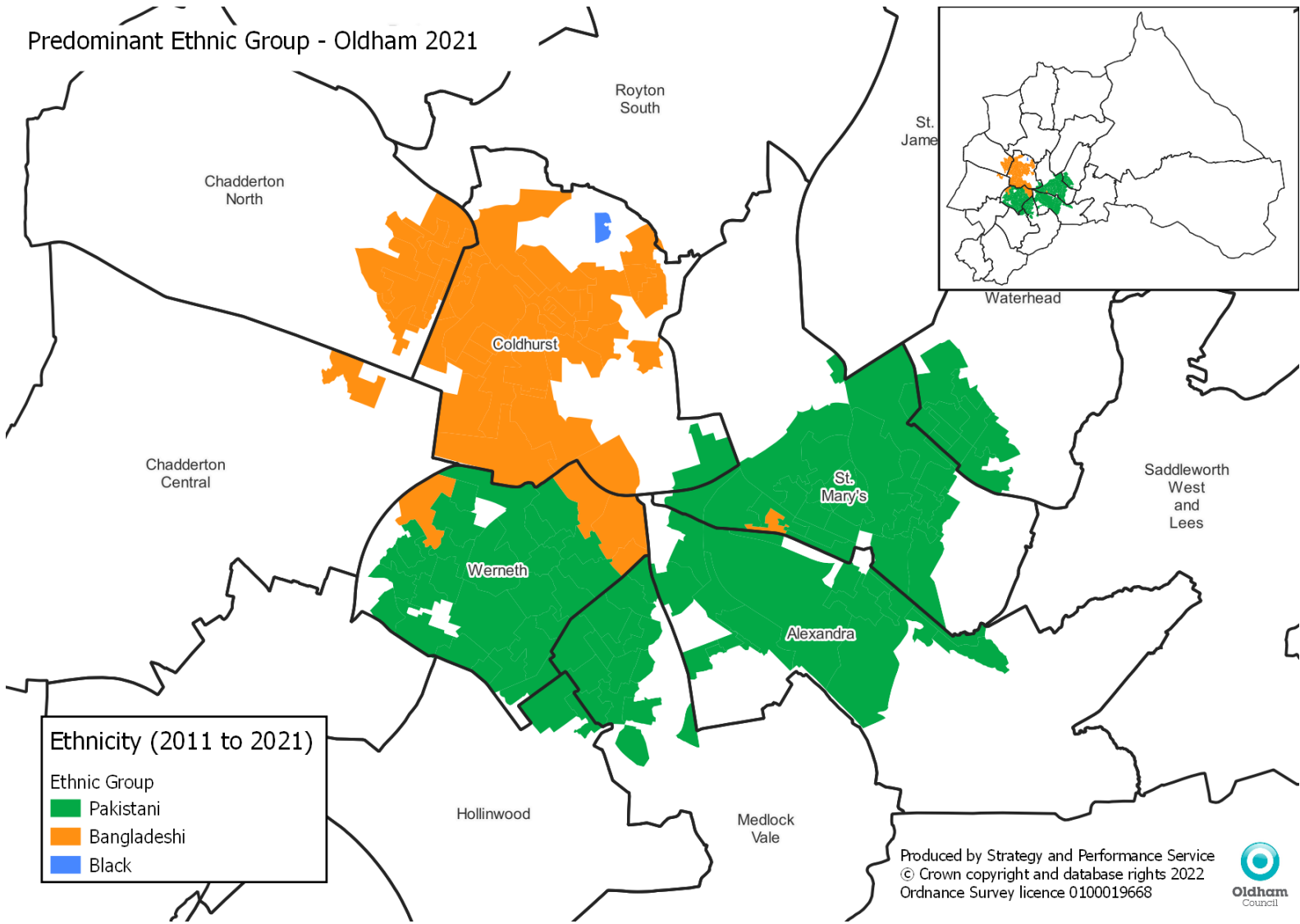
Ethnicity



Key findings

- Oldham has a diverse population and the ethnic composition has changed significantly since 2011.
- There are now less than one in five people in Werneth from a white background (17.3%) this is the lowest rate across Oldham.
- In St. Mary's just over one in two residents are from a Pakistani background (50.3%). This is the highest rate across Oldham.
- Coldhurst has the highest proportion of people from a Bangladeshi background (60.7%)

Source: ONS Census 2021 – Table TS021



Key findings

- Oldham's Bangladeshi and Pakistani communities live primarily in the wards surrounding the town centre. These wards are typically the most deprived within Oldham.
- The Pakistani community lives in three main areas, the main areas being in Werneth, St. Mary's and Alexandra. However, as the population has grown there are now significant clusters of Pakistani residents emerging in Waterhead and Medlock Vale.
- The Bangladeshi community primarily lives in Coldhurst but as the population has increased there are now clusters of Bangladeshi heritage residents in Chadderton North and Werneth.

Source: ONS Census 2021 – Table TS021

6. Types of Employment (16-74 Year Olds)

	2021 Employed Part-time %	2021 Employed full-time %	2011 Employed Part Time %	2011 Employed Full Time %
Alexandra	36.1%	63.9%	32.0%	68.0%
Chadderton Central	26.8%	73.2%	24.1%	75.9%
Chadderton North	29.7%	70.3%	28.3%	71.7%
Chadderton South	26.1%	73.9%	25.0%	75.0%
Coldhurst	45.1%	54.9%	46.0%	54.0%
Crompton	24.6%	75.4%	23.5%	76.5%
Failsworth East	23.6%	76.4%	24.7%	75.3%
Failsworth West	24.3%	75.7%	24.7%	75.3%
Hollinwood	29.8%	70.2%	29.9%	70.1%
Medlock Vale	32.7%	67.3%	29.8%	70.2%
Royton North	24.2%	75.8%	25.7%	74.3%
Royton South	23.7%	76.3%	23.2%	76.8%
Saddleworth North	24.4%	75.6%	24.6%	75.4%
Saddleworth South	25.3%	74.7%	26.0%	74.0%
Saddleworth West and Lees	22.4%	77.6%	23.3%	76.7%
Shaw	24.1%	75.9%	24.2%	75.8%
St. James'	26.5%	73.5%	24.8%	75.2%
St. Mary's	39.8%	60.2%	39.1%	60.9%
Waterhead	28.6%	71.4%	27.2%	72.8%
Werneth	37.9%	62.1%	40.2%	59.8%
Oldham	28.5%	71.5%	27.5%	72.5%
England	25.8%	74.2%	26.2%	73.8%

Key findings

- Since 2011 the proportion of people employed full-time in Oldham has decreased by 1 percentage point whereas nationally the proportion working full-time has increased (0.4%).
- Across the borough we have quite a mixed picture. Wards such as Alexandra and Medlock Vale have seen a significant increase in the proportion working part-time, whereas wards such as Werneth, Failsworth East and Royton North have all seen a significant increase in the proportion working full-time.
- Coldhurst has the lowest proportion of residents employed full-time (54.9%). This is significantly lower than the Oldham and National average. St. Mary's, Werneth and Alexandra also have lower proportions of full-time workers. Saddleworth W&L has the highest proportion of residents employed full-time (77.6%)

Source: ONS Census Table TS066 (2021)

7. Worklessness (16-74 Year Olds)

	2021			2011		
	Unemployed %	Long Term Sick/Disabled %	Looking after home/family %	Unemployed %	Long term sick/disabled %	Looking after home/family %
Alexandra	6.1	9.4	13.2	8.6	10.6	9.1
Chadderton Central	3.5	4.6	5.3	4.1	5.2	3.0
Chadderton North	4.2	4.1	7.4	4.7	3.9	4.8
Chadderton South	3.4	5.8	5.2	5.2	6.0	3.8
Coldhurst	7.0	8.2	15.4	9.4	8.8	12.8
Crompton	2.4	3.9	3.2	3.1	4.2	2.3
Failsworth East	3.3	5.1	3.3	3.8	4.3	2.5
Failsworth West	3.7	5.2	4.1	4.6	5.3	3.5
Hollinwood	5.5	8.0	8.3	7.6	8.8	6.9
Medlock Vale	4.7	6.8	11.1	7.4	7.2	8.5
Royton North	2.7	4.2	3.0	3.5	4.1	2.5
Royton South	3.2	4.3	3.4	4.0	4.0	2.5
Saddleworth North	2.0	2.3	2.7	2.7	2.3	2.4
Saddleworth South	2.1	2.5	2.3	2.4	2.0	2.2
Saddleworth West and Lees	2.2	3.6	2.7	3.3	3.2	2.3
Shaw	3.9	5.6	4.0	4.2	5.5	3.0
St. James'	4.3	6.4	5.6	6.7	6.1	4.4
St. Mary's	6.3	7.0	15.6	7.8	8.1	13.6
Waterhead	4.1	6.7	8.9	6.7	6.8	6.6
Werneth	6.4	6.6	15.1	7.2	7.7	13.8
Oldham	4.1	5.6	7.4	5.4	5.8	5.7
England	3.5	4.1	4.8	4.4	4.0	4.4

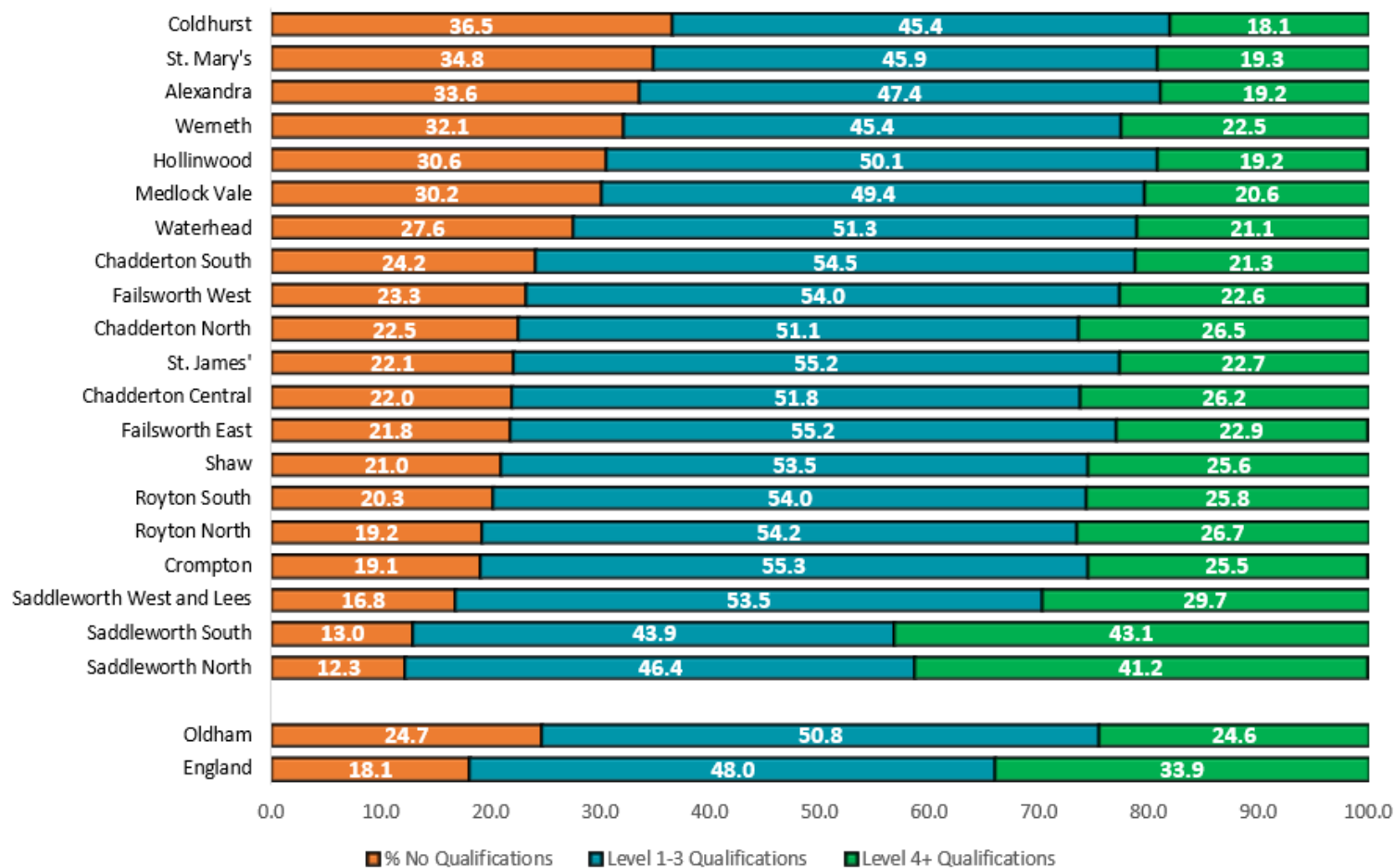
Key findings

- The proportion of residents who are classed as looking after family/home has increased in almost every ward since 2011, with the Oldham average increasing from 5.7% in 2011 to 7.4% in 2021.
- There are large differences between the wards of Oldham when looking at the unemployment rate, wards such as Coldhurst and Werneth have an unemployment rate of 7.0% and 6.4% respectively whereas Saddleworth North and Saddleworth South have an unemployment rate of 2.0% and 2.1% respectively.
- St. Mary's (15.6%), Coldhurst (15.4%) and Werneth (15.1%) have a significantly larger proportion of people who are not employed but looking after home/family. This can be attributed to the population demographics within these wards.

Source: ONS Census Table TS066 (2021)

8. Qualifications

Qualifications



Source: ONS Census 2021 – Table TS067

Key findings

- There is a significantly higher proportion of residents within Oldham with no qualifications (24.7%) compared to the national rate (18.1%) However this has reduced from 29.6% in 2011.
- Coldhurst has a large proportion of residents with no qualification (36.5%) this is more than double the national average.
- Oldham has now nearly one in four residents with a Level 4+ Qualification (Degree or Higher). This has also improved since 2011 (18.6%)
- The only wards to outperform the national average are Saddleworth South and Saddleworth North, which have 43.1% and 41.2% respectively.

9. Housing Tenure

	2021			2011		
	% owner occupied	% Social rented	% Private rented	% owner occupied	% Social rented	% Private rented
Alexandra	36.3	42.9	20.0	40.3	41.8	16.1
Chadderton Central	64.5	15.3	13.9	74.6	14.0	10.4
Chadderton North	64.2	15.0	14.0	74.4	15.3	9.0
Chadderton South	61.1	20.1	18.8	67.3	19.7	12.1
Coldhurst	32.7	38.3	18.4	39.9	46.4	11.6
Crompton	73.0	9.6	12.6	80.3	10.3	8.2
Failsworth East	64.3	15.2	18.4	73.3	14.0	11.4
Failsworth West	62.1	18.7	18.7	66.9	18.7	13.2
Hollinwood	42.4	38.2	18.9	46.1	39.5	13.1
Medlock Vale	52.2	29.3	21.9	55.9	26.3	16.0
Royton North	66.2	15.2	10.4	75.9	16.7	6.6
Royton South	72.1	12.3	15.8	76.8	12.3	10.2
Saddleworth North	70.8	5.8	11.9	82.2	6.6	10.0
Saddleworth South	73.6	6.8	11.4	80.8	6.5	11.8
Saddleworth West and Lees	76.2	8.6	16.5	77.5	8.7	12.6
Shaw	58.2	16.8	18.3	67.4	18.3	13.1
St. James'	55.6	27.9	17.6	60.0	27.2	12.1
St. Mary's	43.9	28.8	24.0	51.3	28.9	17.3
Waterhead	59.1	24.5	23.4	59.3	24.5	14.6
Werneth	43.4	22.2	18.7	56.5	26.2	14.4
Oldham	60.4	21.2	17.7	65.3	21.1	12.2
England	61.3	17.1	20.5	64.1	17.7	16.8

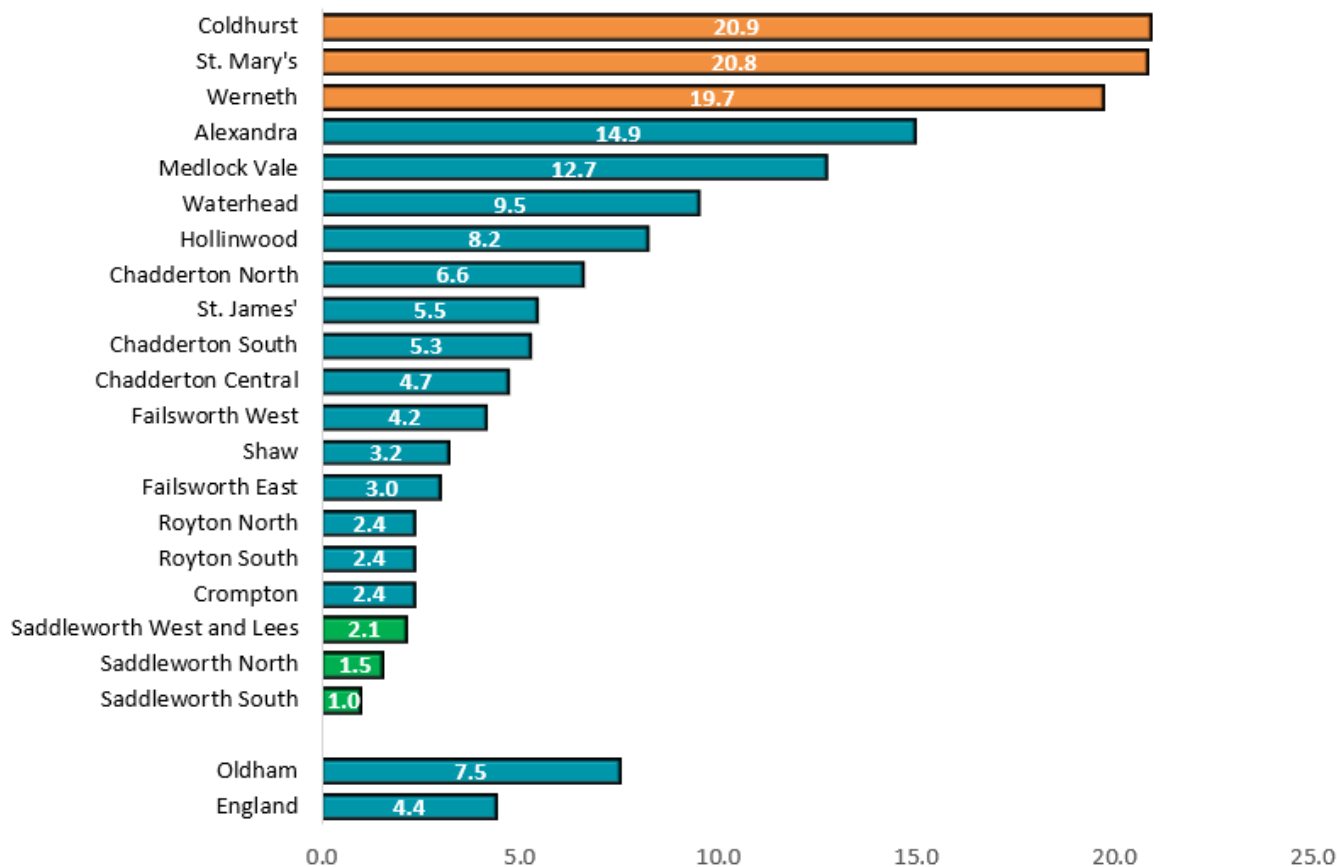
Key findings

- Housing tenure has changed considerably since 2011, caused mainly by the large increase in privately rented properties with only Saddleworth South seeing a reduction in the proportion of houses that are privately rented.
- The proportion of privately rented households varies considerably by ward, ranging from 24.0% in St. Mary's, 23.4% in Waterhead and 21.9% in Medlock Vale to 10.4% in Royton North.
- The proportion of social rented households varies considerably by ward, ranging from 42.9% in Alexandra, 38.3% in Coldhurst and 38.2% in Hollinwood to 5.8% in Saddleworth North and 6.8% in Saddleworth South.
- The proportion of owner occupied households varies considerably by ward, ranging from 76.2% in Saddleworth West & Lees to 32.7% in Coldhurst.

Source: ONS Census 2021 – Table TS054

10. Overcrowding

% of Households Overcrowded

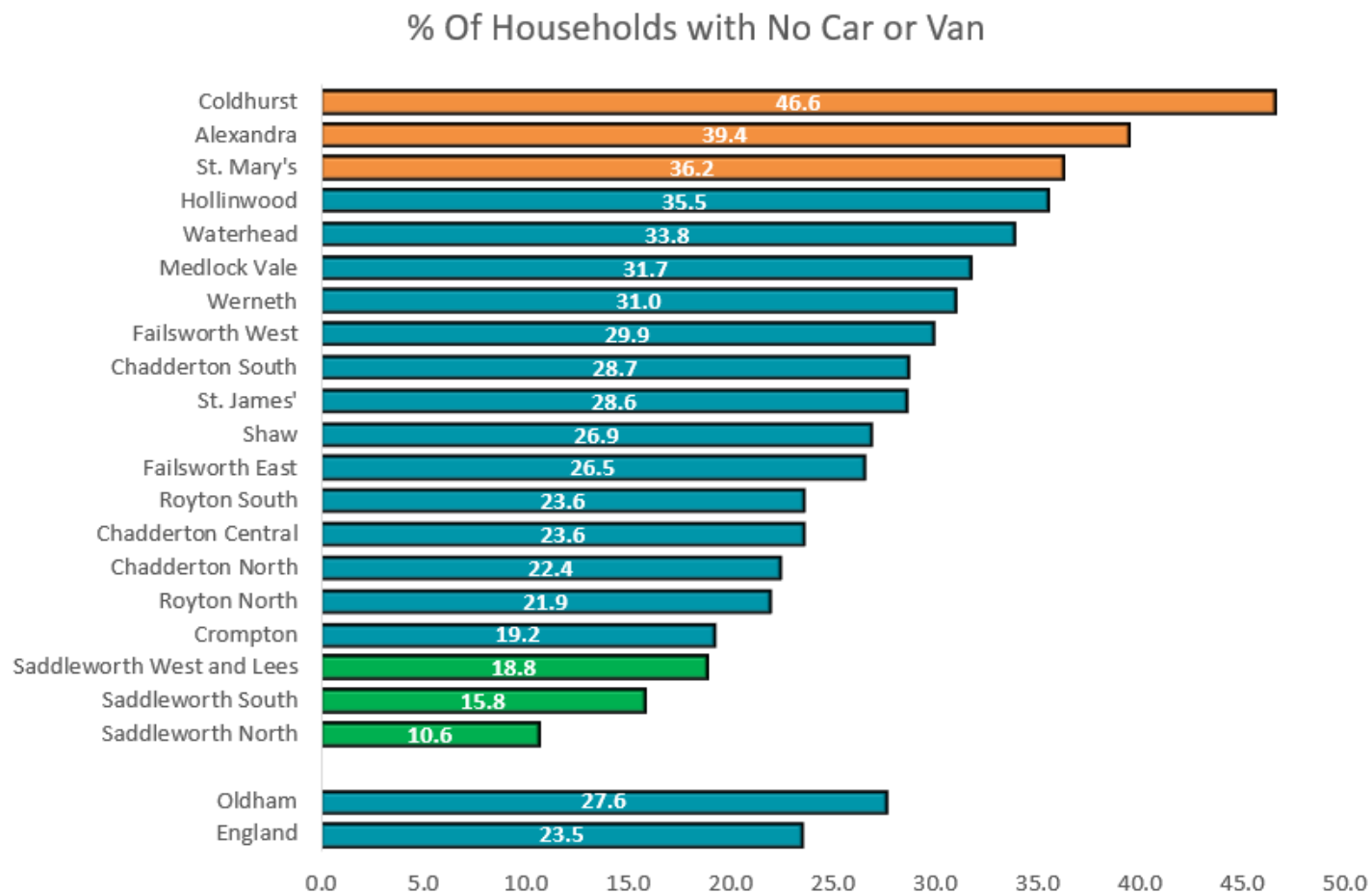


Key findings

- In Oldham 7.5% of households are classed as Overcrowded this is the same figure as 2011. However, the national rate has reduced from 8.4% to 4.4% over the last ten years.
- The proportion of households classed as overcrowded in Oldham varies significantly by ward. In Coldhurst 20.9% of households are classed as overcrowded whereas in Saddleworth South only 1.0% of households are classed as overcrowded.
- Coldhurst, St. Mary's and Werneth all have a proportion of overcrowding which is more than double the Oldham average.

Source: ONS Census 2021 - Table TS052

11. Car/Van Availability



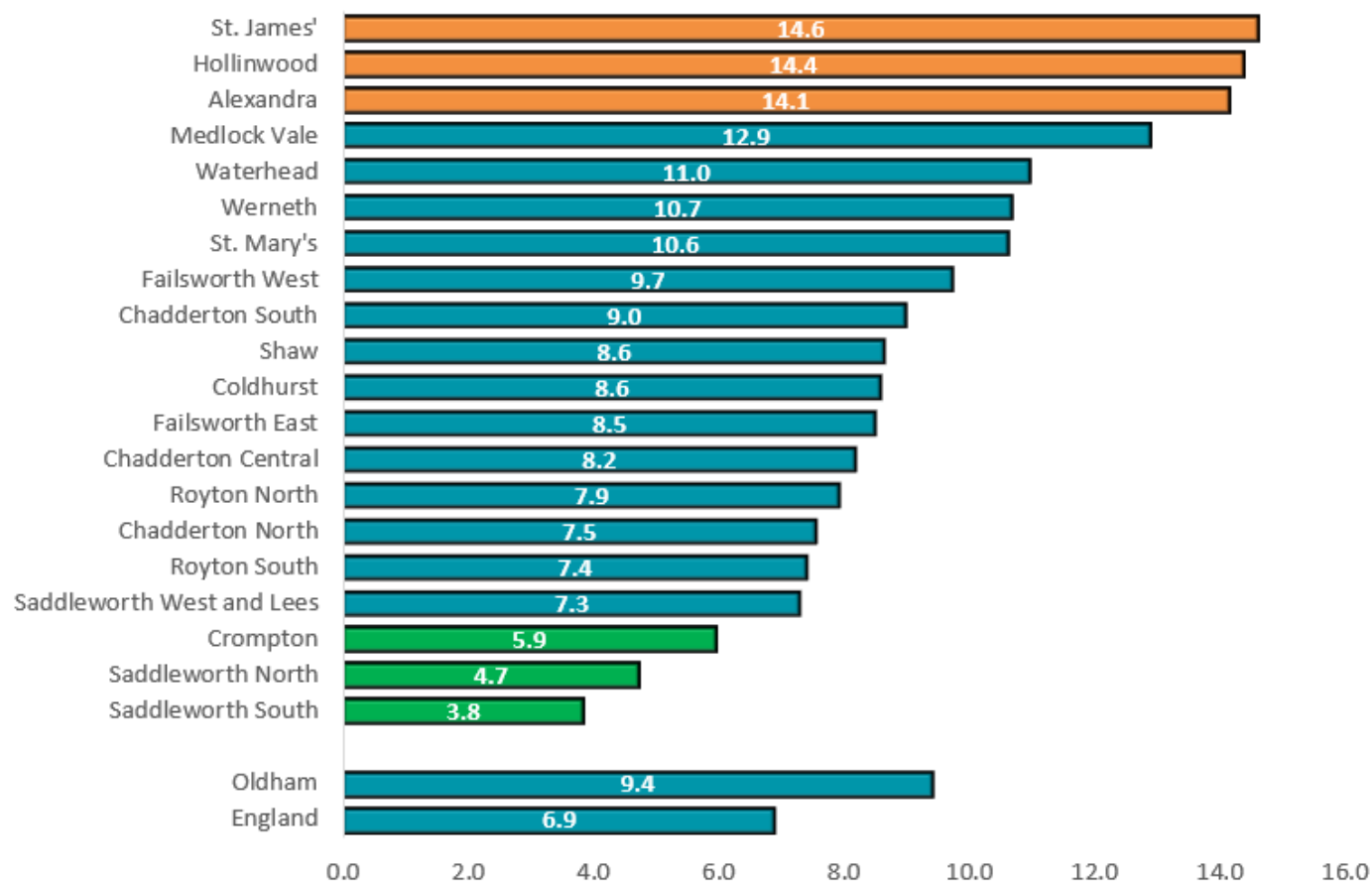
Key findings

- The proportion of households in Oldham that have no car or van (27.6%) is higher than the national rate (23.5%). However, this figure has reduced from 31.2% in 2011.
- The proportion of households in Oldham with no car or van differs significantly by ward. In Coldhurst nearly half of households (46.2%) have no car/van whereas in Saddleworth North only 10.6% of households have no car.

Source: ONS Census 2021 - Table TS045

12. Lone Parents

Lone Parents With Dependent Children (% of Households)



Key findings

- Oldham has a larger proportion of lone parent households with dependent children (9.4%) than the national average (6.9%). This figure has gone up from 9.0% since 2011 whereas the national figure has reduced from 7.1%
- The proportion of lone parent households with dependent children varies significantly by ward, ranging from 14.6% in St. James' to 3.8% in Saddleworth South.

Source: ONS Census Table TS021 (2021)

Future briefings

Briefings containing more detailed analyses including more comparisons with the 2011 Census where appropriate will be produced as soon as possible. The ONS census release calendar can be found at <https://www.ons.gov.uk/releasecalendar?view=upcoming&query=census>

Ward level figures

These figures released on the 30th January cover all the topic summaries at ward level. The data can be found on Nomis with the appropriate topic summary. (<https://www.nomisweb.co.uk/query/select/getdatasetbytheme.asp?theme=93>)

Further information

For further information about this 2021 Ward Census Briefing and plans for future Census analysis and Briefings contact the Strategy and Performance team (strategyandperformance@oldham.gov.uk)

Future census reports and previous reports from the Strategy and performance team can be found at - https://intranet.oldham.gov.uk/info/20243/find_data_and_intelligence_relating_to_oldham/706/2021_census

For the latest ONS information about the release of the 2021 Census outputs and statistical bulletins go to: www.ons.gov.uk/census